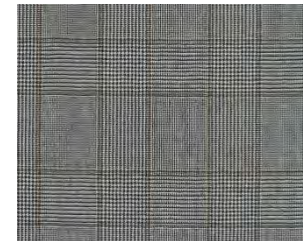


秋十
冬七

A/W17'

CAPSULE COLLECTION



SUIT

Fabric/ IZUMO-6 #2
Model/ MONTEREY(Jk.)
BRIGHTON(Tr.)
Mark : 80-04-9002



COAT

Fabric/ EZO-1 #8
Model/ GROSVENOR
Mark : 80-33-9001



SUIT

Fabric/ GUJO-1 #5

Model/ PHOENIX(Jk.)

WINDSOR(Tr.)

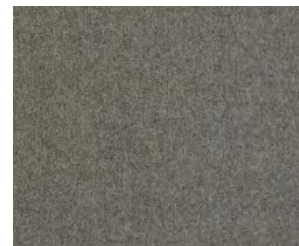
Mark : 80-07-9003

COAT

Fabric/ EZO-1 #8

Model/ GROSVENOR

Mark : 80-33-9001





SUIT

Fabric/ KISO-5 #4

Model/ MAYFAIR(Jk.)

CHELSEA(Tr.)

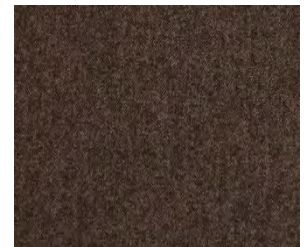
Mark: 80-01-9004

COAT

Fabric/ NASU-1 #27

Model/ RUSSELL

Mark: 80-34-9003



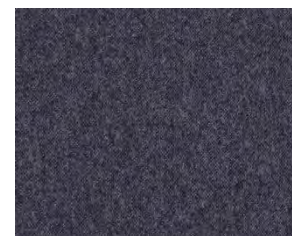


SUIT

Fabric/ KISO-4 #4

Model/ MONTE CARLO(Jk.)
BRIGHTON(Tr.)

Mark: 80-05-9005



COAT

Fabric/ EZO-1 #4

Model/ RUSSELL

Mark: 80-34-9002

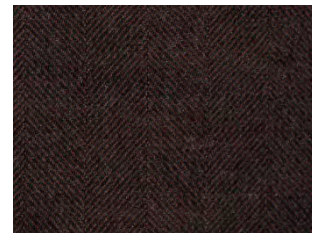


SUIT

Fabric/ HIDA-8 #2
Model/ PHOENIX(Jk.)
 CHELSEA(Tr.)
Mark : 80-07-9006

COAT

Fabric/ NADA-1 #3
Model/ GROSVENOR
Mark : 80-33-9004





JACKET

Fabric/ IGA-3 #7
Model/ PHOENIX(Jk.)
Mark : 80-17-9050

TROUSERS

Fabric/ SUWA-1 #24
Model/ BRIGHTON(Tr.)
Mark : 80-22-9008



COAT

Fabric/ AIZU-1 #9
Model/ HANNOVER
Mark : 80-35-9006



JACKET

Fabric/ NIKKO-1 #3
Model/ PORTLAND(Jk.)
Mark: 80-16-9051

TROUSERS

Fabric/ SUWA-1 #24
Model/ BRIGHTON(Tr.)
Mark: 80-22-9008



COAT

Fabric/ AIZU-1 #1
Model/ GROSVENOR
Mark: 80-33-9005



JACKET

Fabric/ HIDA-1 #10

Model/ MONTE CARLO(Jk.)

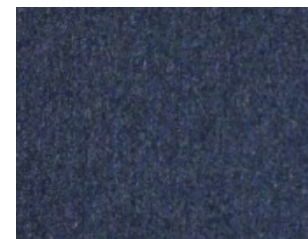
Mark : 80-15-9052

TROUSERS

Fabric/ SUWA-1 #5

Model/ CHELSEA(Tr.)

Mark : 80-21-9010



COAT

Fabric/ NOTO-3 #4

Model/ HANNOVER

Mark : 80-35-9007



JACKET

Fabric/ NASU-1 #39
Model/ PORTLAND(Jk.)
Mark : 80-18-9053

TROUSERS

Fabric/ SUWA-1 #12
Model/ WINDSOR(Tr.)
Mark : 80-23-9009



COAT

Fabric/ NOTO-3 #4
Model/ HANNOVER
Mark : 80-35-9007



KNIT JACKET

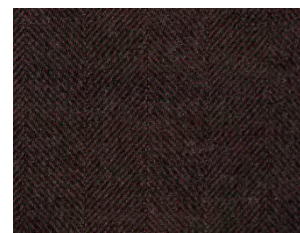
Fabric/ LORY

Mark: 6FW-D587

TROUSERS

Fabric/ GUJO-1 #5

Model/ WINDSOR(Tr.)



COAT

Fabric/ NADA-1 #3

Model/ GROSVENOR

Mark: 80-33-9004